

Name: _____

Date: _____

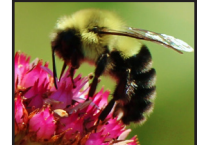
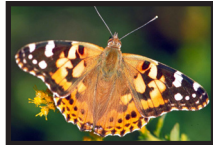
Family Worksheet for 3rd-5th grade: Summer at The Battery

NOTE: Remember to print a map and bring it with you on your adventure!
As you move to the different areas of the park, fill in the questions for that area.
Ask a friend or family member for help if you get stuck!



In the Labyrinth

Stay still for a few minutes and observe the wildlife. Can you find all of these park residents?



Can you find any other animals making their home here in the park? Draw or list them here:

////// On the Farm

Some of the animals that visit the park help with an important job on the farm: *pollinating* the flowers so they can grow into fruits and seeds. Take some time to observe the flowering plants around the farm. What different types of animals visit the flowers?

Can you find any examples of flowers that have been pollinated and turned into fruits?

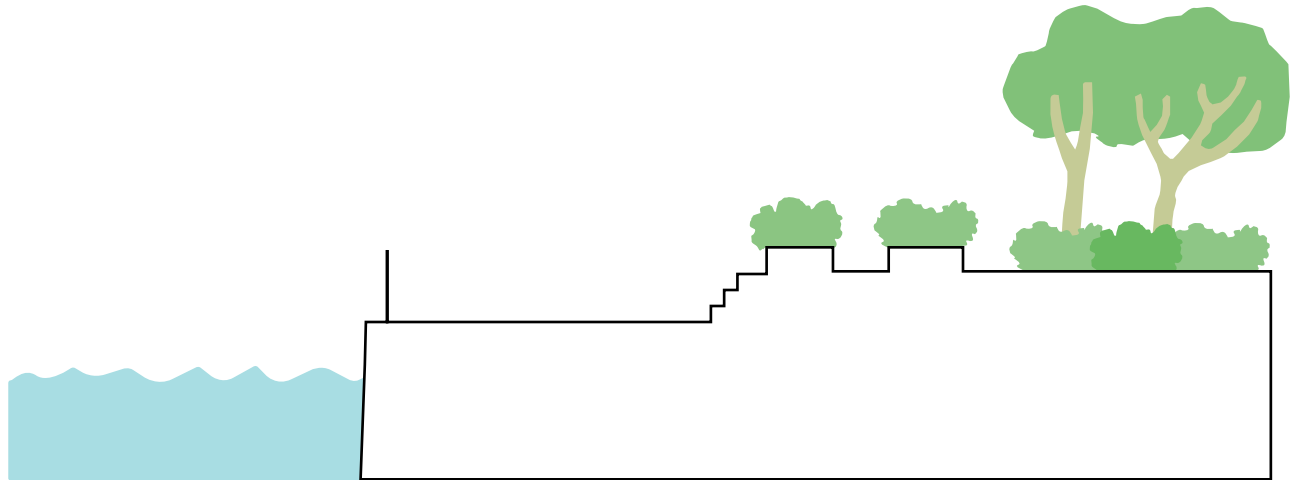
Please follow social distancing guidelines while in the park, to protect yourself and others.

Please follow social distancing guidelines while in the park, to protect yourself and others.



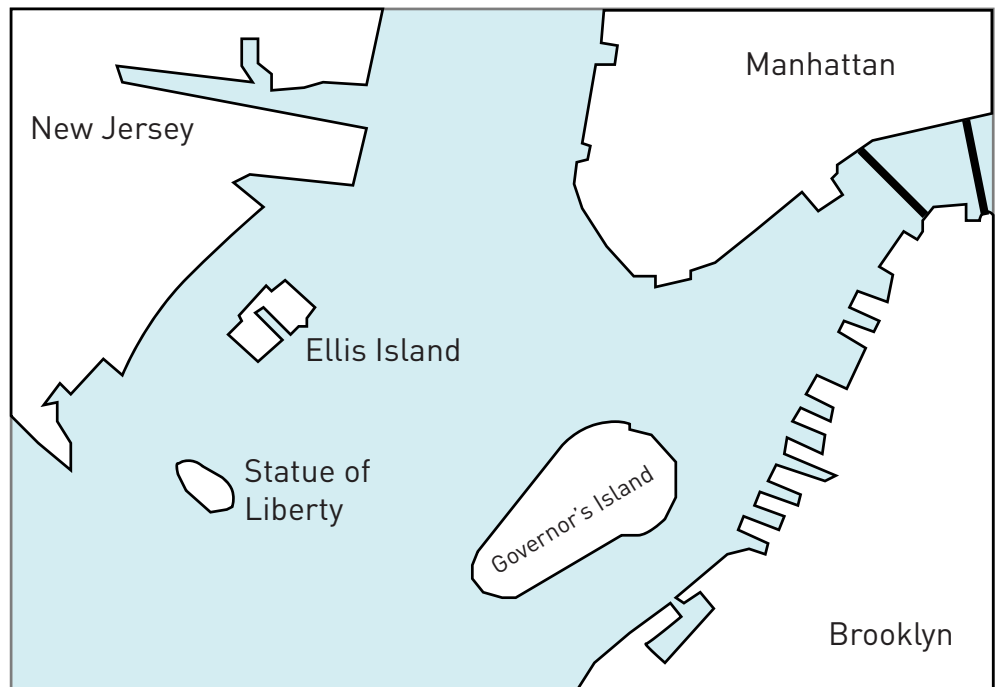
In the Bosque

During Hurricane Sandy in 2012, much of this area was flooded by waves in the storm. What would you engineer to protect the plants from future storms and higher waves? Draw and label your solution by adding to the image of the Bosque and Promenade below.



By the Water

Look at this map. Using clues that you can see around you, can you mark where you're standing as you look out on the river?



Thank you for visiting! We hope you enjoyed exploring the park. Check out our other seasonal worksheets and more at www.thebattery.org

Email education@thebattery.org with questions or for list of image sources.