

Name: _____

Date: _____

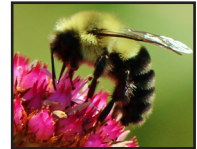
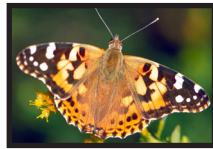
Family Worksheet for 3rd-5th Grade: Fall at The Battery

NOTE: Remember to print a map and bring it with you on your adventure!
As you move to the different areas of the park, fill in the questions for that area.
Ask a friend or family member for help if you get stuck!



In the Labyrinth

Stay still for a few minutes and observe the wildlife. Can you find all of these park residents?



Find the tree trunk with holes made by a woodpecker, and draw the pattern of the holes here:

Look around for other evidence of animals changing the park environment. Can you list how each of the animals above might change their environment?

////// On the Farm

Look at the flower beds at the front of the farm, near the gate. After a flower has been *pollinated* by a bee or butterfly or other bug, the plant can turn the flower into a *fruit* that holds *seeds*. Each of these fruits and seeds has special features that help them travel to a new location to find a spot to grow. Can you find examples of fruits and seeds with the following characteristics? Draw what you find for each example:

Prickly seeds that stick to clothes and fur

Seeds with hairs or wings that help them float on the wind

Juicy fruits that animals eat, carrying the seeds away

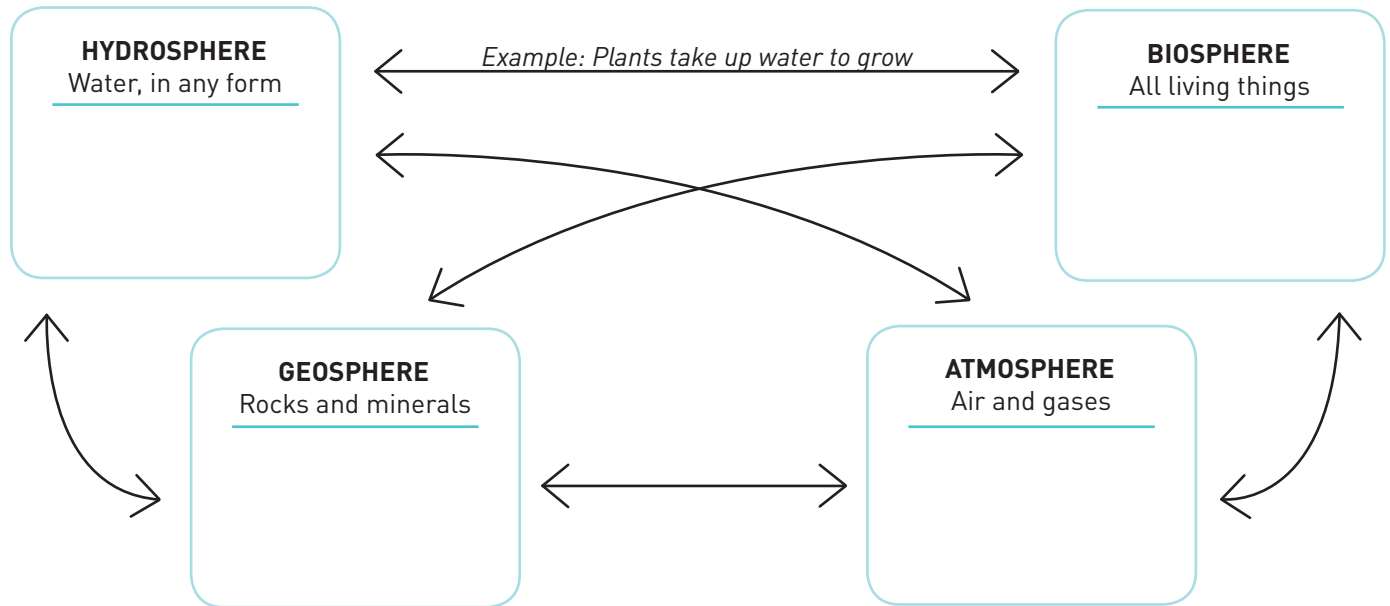
Please follow social distancing guidelines while in the park, to protect yourself and others.

THE BATTERY



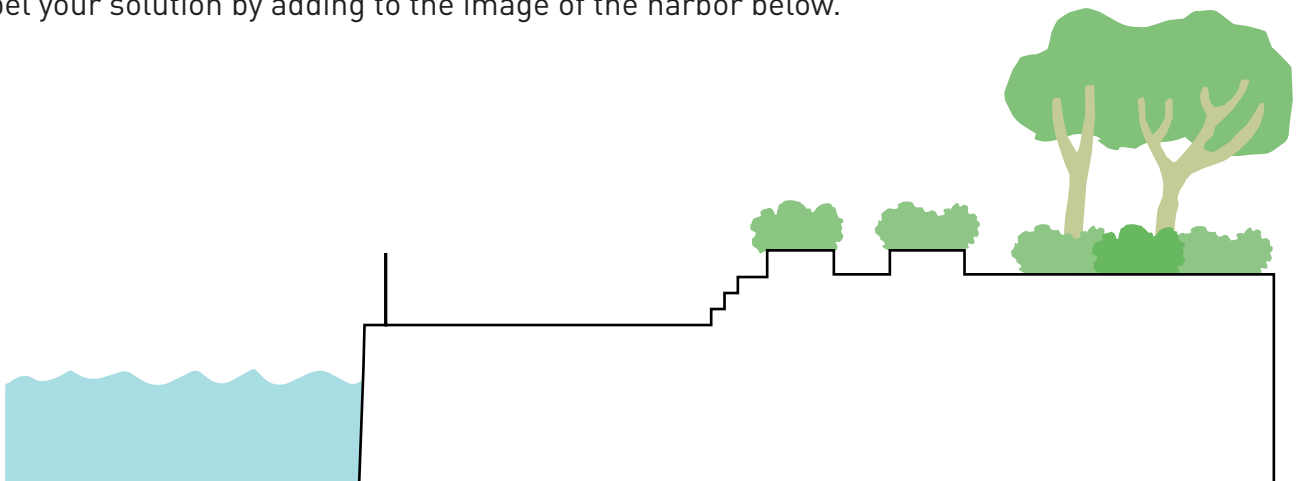
In the Bosque

Our planet is made up of different interacting systems, and we can find examples of them here in the park. Below, we've listed the four major parts of our Earth ecosystem, with definitions. Explore the Bosque and see if you can fill out these lists by finding at least two items that fit each category. *BONUS: Fill in each arrow to describe how the two connected spheres interact (we've put an example in italics below).* There are a number of different solutions to this puzzle; which will you pick?



By the Water

During Hurricane Sandy in 2012, much of this area was flooded by waves in the storm. What would you engineer to protect the plants from future storms and higher waves? Draw and label your solution by adding to the image of the harbor below.



Thank you for visiting! We hope you enjoyed exploring the park.
Check out our other seasonal worksheets and more at www.thebattery.org

Email education@thebattery.org with questions or for list of image sources.