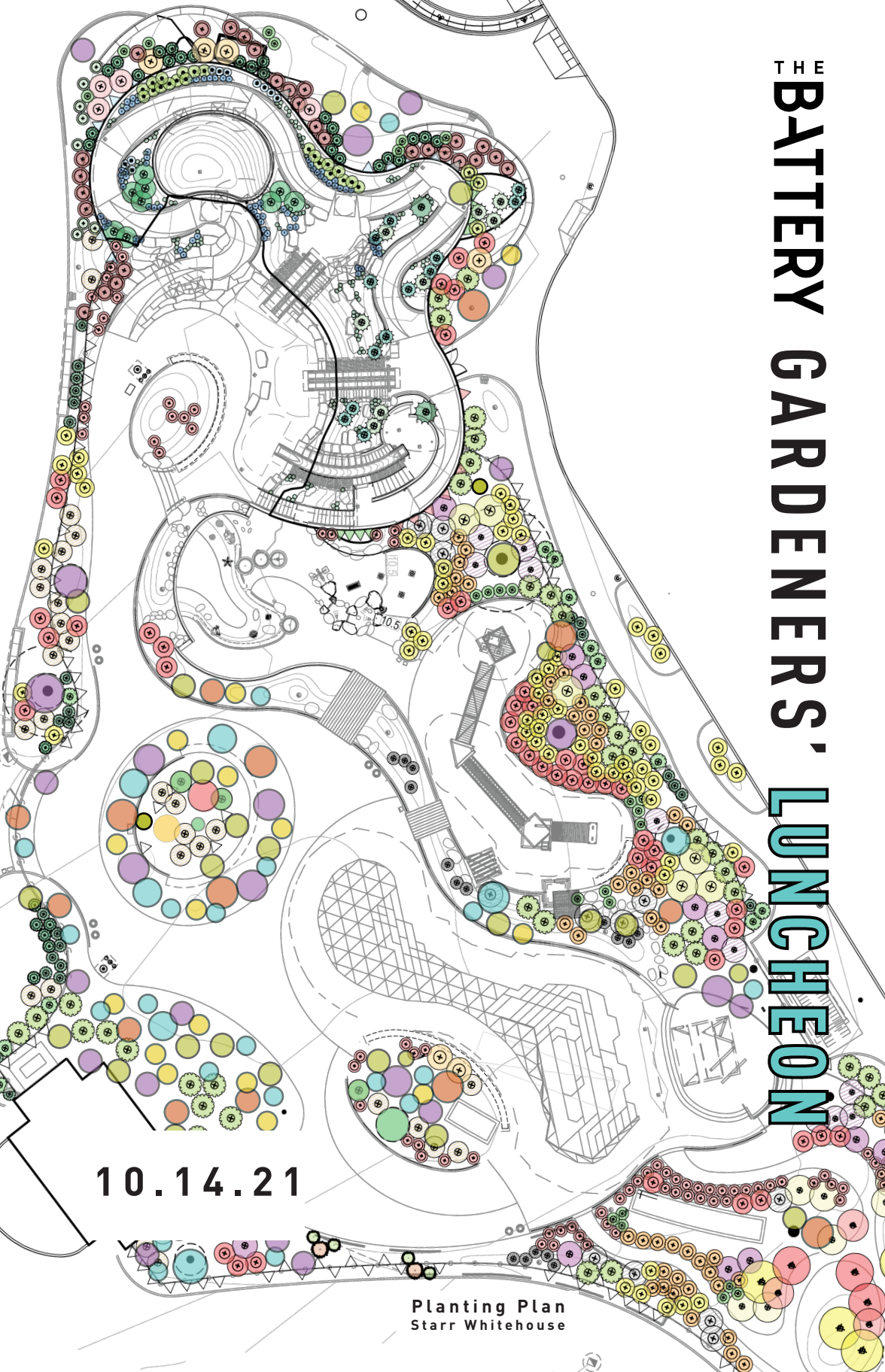


# THE BATTERY GARDENERS' LUNCHEON

10.14.21

Planting Plan  
Starr Whitehouse



**THE 17<sup>TH</sup> BATTERY GARDENERS' OUTDOOR LUNCHEON**  
**CELEBRATES**

**PLANTS & PLAY**

**THURSDAY, OCTOBER 14, 2021**

JOIN US TO EXPLORE COLOR, TEXTURE AND  
THE INTERPLAY OF FIVE ECOLOGY ZONES  
IN THE SOON TO OPEN  
**BATTERY PLAYSCAPE**

PRESENTATION BY  
BATTERY PLAYSCAPE LANDSCAPE DESIGNER

**LAURA STARR, PARTNER**

**STARR WHITEHOUSE  
LANDSCAPE ARCHITECTS AND PLANNERS**

11 AM    PLAYSCAPE TOUR

12 PM    OUTDOOR LUNCH

*We request all attendees be vaccinated*

*Each guest will receive the 2021 limited edition Playscape Pot designed to  
honor the gardens of Playscape, hand struck in Impruneta, Italy*

*Enter park across from 17 State Street*

# THE BATTERY GARDENERS' LUNCHEON

THURSDAY, OCTOBER 14, 2021

## TABLES 10 GUESTS

- ☐ \$75,000 Playscape Gardener
- ☐ \$50,000 ShowBox Gardener
- ☐ \$25,000 Enchanted Gardener
- ☐ \$10,000 Magical Gardener
- ☐ \$5,000 Inspired Gardener

## TICKETS

- ☐ \$2,500 x \_\_\_\_\_ Gorgeous Gardener
- ☐ \$1,000 x \_\_\_\_\_ Devoted Gardener
- ☐ \$500 x \_\_\_\_\_ Nurturing Gardener

☐ Unable to attend, pleased to give \$ \_\_\_\_\_

RECOGNITION NAME (FOR PROGRAM LISTING)

CONTACT NAME

COMPANY NAME

EMAIL

☐ ENCLOSED IS A CHECK FOR \$ \_\_\_\_\_ PAYABLE TO THE BATTERY CONSERVANCY

☐ PLEASE CHARGE \$ \_\_\_\_\_ ON MY: ☐ AMEX ☐ MC ☐ VISA ☐ DISC

CARD NUMBER

EXP. DATE

CVV

NAME ON CARD

BILLING ADDRESS

CITY

STATE

ZIP

SIGNATURE

**KINDLY RESPOND BY SEPTEMBER 30**

**THE BATTERY CONSERVANCY** ONE WHITEHALL STREET, FLOOR 17, NEW YORK NY 10004 E: [EVENTS@THEBATTERY.ORG](mailto:EVENTS@THEBATTERY.ORG) T: 212.344.3495 W: [THEBATTERY.ORG](http://THEBATTERY.ORG)

THE BATTERY CONSERVANCY IS A 501(C)(3) NON-PROFIT ORGANIZATION, TAX ID# 13-3769101

THE NON-DEDUCTIBLE PORTION OF EACH TICKET/TABLE IS \$75/\$750

## BATTERY PLAYSCAPE

The Battery Conservancy funded the design of Playscape to engage children in creative play and learning within the natural world.

Playscape's 1.4 acres consist of five ecology zones, intended to inspire commitment to environmental stewardship.

**The Bluff** features five granite slides surrounded by native trees, perennial plants, and large boulders from the Adirondacks.

**The Riverbed** includes water/sand play opportunities, rain gardens, and bridges that channel the flow of water after a storm.

**The Marsh** encompasses a village of seven houses for imaginary play, climbing and balancing, and experiencing harbor vistas from twenty feet above the ground.

**The Dune** presents a series of steps, molded sand dunes, and a 9-foot climbing wall.

**The Meadow** is densely planted with trees and gardens lining the meandering pathways, to engage children with flowers, insects, worms, and butterflies.

Amid the enchantment sits ShowBox, the first improv children's theater in a New York City park, designed to encourage spontaneous performances and puppetry.